



## Benefits

- **Standard thickness 6mm, although other thicknesses are available upon request.**
- **Offers long term performance without collapse or "bottoming" out under high point loads.**
- **Capable of withstanding loads up to and including 0.8N/mm<sup>2</sup>, with low frequency performance achieved.**
- **Resistant to ageing and deformation.**
- **Quick and easy to install - simply bond to the subfloor beneath the blockwork.**
- **Minimises construction heights.**
- **High quality and exact material thickness guaranteed.**

## Description

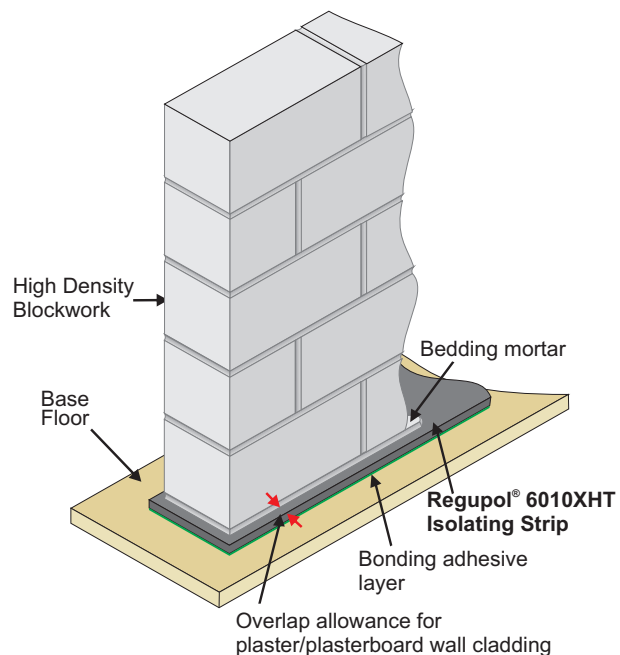
**Regupol® 6010XHT Acoustic Isolating Strips** are designed to sit beneath blockwork walls and are a very simple and effective way to reduce structure borne noise and being a rubber crumb product benefits from longevity and minimal creep.

## Physical Properties

|                       |  |
|-----------------------|--|
| Material Thickness    | 6mm                                      |
| Standard Strip Widths | 43mm, 100mm, 120mm, 200mm                |
|                       | Other widths are available upon request. |

## Installation Guidelines

Please contact CMS Acoustics for individual Installation Guidelines.



*This diagram is for illustrative purposes only and is intended to show the installation of a **Regupol® 6010XHT Isolating Strip**. For information relating to your specific applications, please contact CMS Acoustics.*

### NB

1. *The recognized technical rules of the industry, and the code of practice requirements of BS8203:2001 "Installation of Resilient Floor Coverings" are to be observed.*

2. *Regupol Acoustic Underlayments can be easily installed providing BS 8203:2001 and our installation guidelines are observed.*

## Installation Service

In addition to supply of this product CMS Acoustic Solutions offers a competitively-priced installation service anywhere in the UK. Use of our service ensures that installation is performed to the highest standards by tradesmen fully experienced in the specialist skills of fitting acoustic materials correctly. For further details contact our technical team on 01925 577711.



E-mail: [info@cmsacoustics.co.uk](mailto:info@cmsacoustics.co.uk)

Web: [www.cmsacoustics.co.uk](http://www.cmsacoustics.co.uk)

**Northern Office: 4a, Eagle Park, Eagle Park Drive, Warrington WA2 8JA**  
**Tel: 01925 577711 Fax: 01925 577733**

**Southern Office: Dugard House, Peartree Road, Colchester CO3 0UL**  
**Tel: 01206 216690 Fax: 01206 577954**

IMPORTANT: Directions for use are given for guidance only and are not intended to form part of any contract. They should be varied or adapted to suit your particular materials or conditions of use. Goods supplied by the company are made to approved standards from the highest quality raw materials but no warranty or guarantee is given as to their suitability for any particular purpose or application, and no liability is accepted for any loss or damage arising directly or indirectly from the use of the Company's products irrespective of any information given to us as to intended use of such products. It is therefore recommended that prospective users should test a sample of this product under their own conditions to satisfy themselves that the product is suitable for the purpose intended.