



## Advantages

- **Approved as Doc E compliant for conversion and new build standards**
- **Approved for robust standard detail FFT1 (70mm min deep battens) and FFT3 (50mm min standard battens)**
- **Ideal for precast and beam & block floors**

## Description

**Regupol® SoundBatten** is a resilient composite batten floor system for use with Robust Detail floor construction types MF1 (E-FC-1), MF8 (E-FC-2) and SF2 (E-FS :1). There are two types - type FFT1 resilient composite deep batten and type FFT3 resilient composite standard batten.

**Regupol® SoundBatten** has been tested and is certified to provide the necessary acoustic insulation required for compliance with Part 'E' of the building regulations for these RD floor types.

**Regupol® SoundBatten** battens comprise a resilient layer pre-bonded to standard (50mm x 50mm nominal) battens or deep (50mm x 70mm nominal) battens.

## Specification

	Type FFT1	Type FFT3
Length	1800mm	1800mm
Batten cross section	50 x 70mm	50 x 50mm
Resilient layer thickness	15mm	15mm
RD compliance requirement $\Delta L_w$ :	17dB	17dB
SoundBatten rating dB $\Delta L_w$	33dB	29dB

*Measured in accordance with BS EN ISO 140-8:1998*

## Accessories

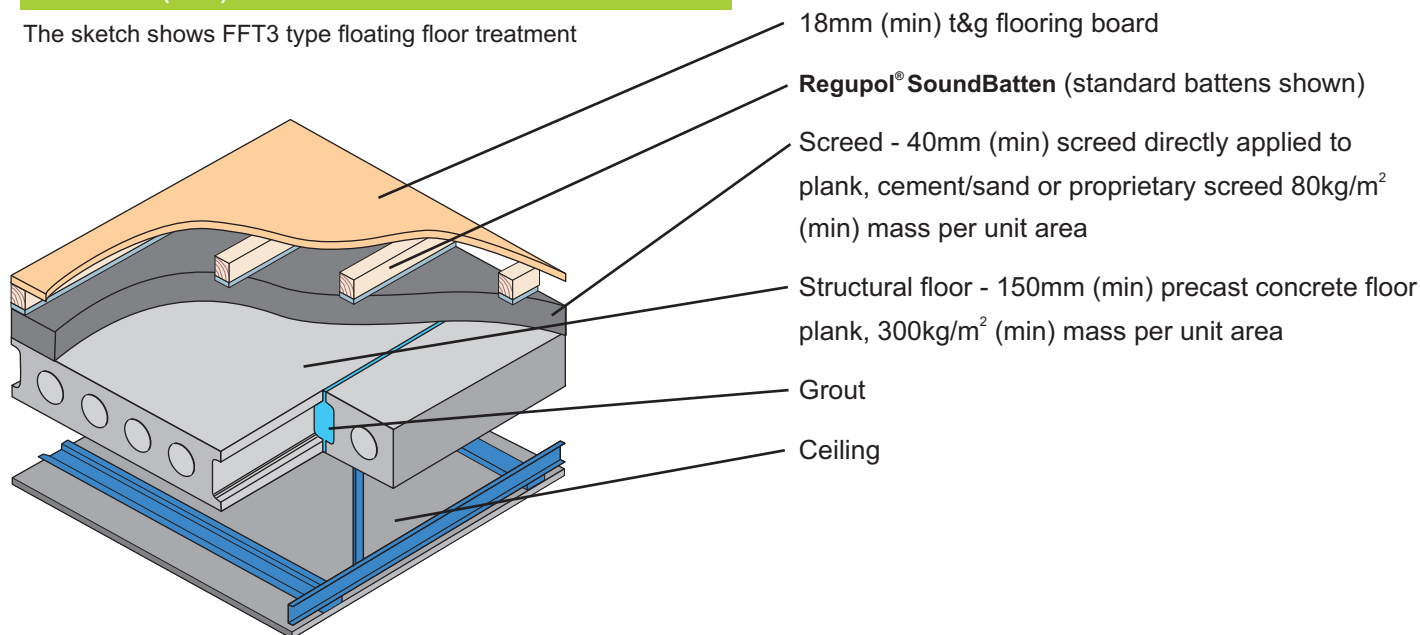
**Regupol® SoundDeck Flanking Band** must be used around the perimeter of floors laid with **Regupol® SoundBatten** to ensure compliance.

## Installation

- Fill all voids between walls and floor.
- Ensure that the concrete floor is level and clean.
- Lay **Regupol® SoundBatten** battens at spacings recommended by the flooring board manufacturer.
- Ensure that the ends of the battens do not come into direct contact with walls.
- Ensure that any services do not bridge the resilient layer.
- Lay flooring board and butt panels tightly together.
- Install **Regupol® SoundDeck Flanking Band** around the perimeter of the flooring board to isolate floor from walls and skirtings.

## Installation (cont)

The sketch shows FFT3 type floating floor treatment



18mm (min) t&g flooring board

Regupol® SoundBatten (standard battens shown)

Screed - 40mm (min) screed directly applied to plank, cement/sand or proprietary screed 80kg/m<sup>2</sup> (min) mass per unit area

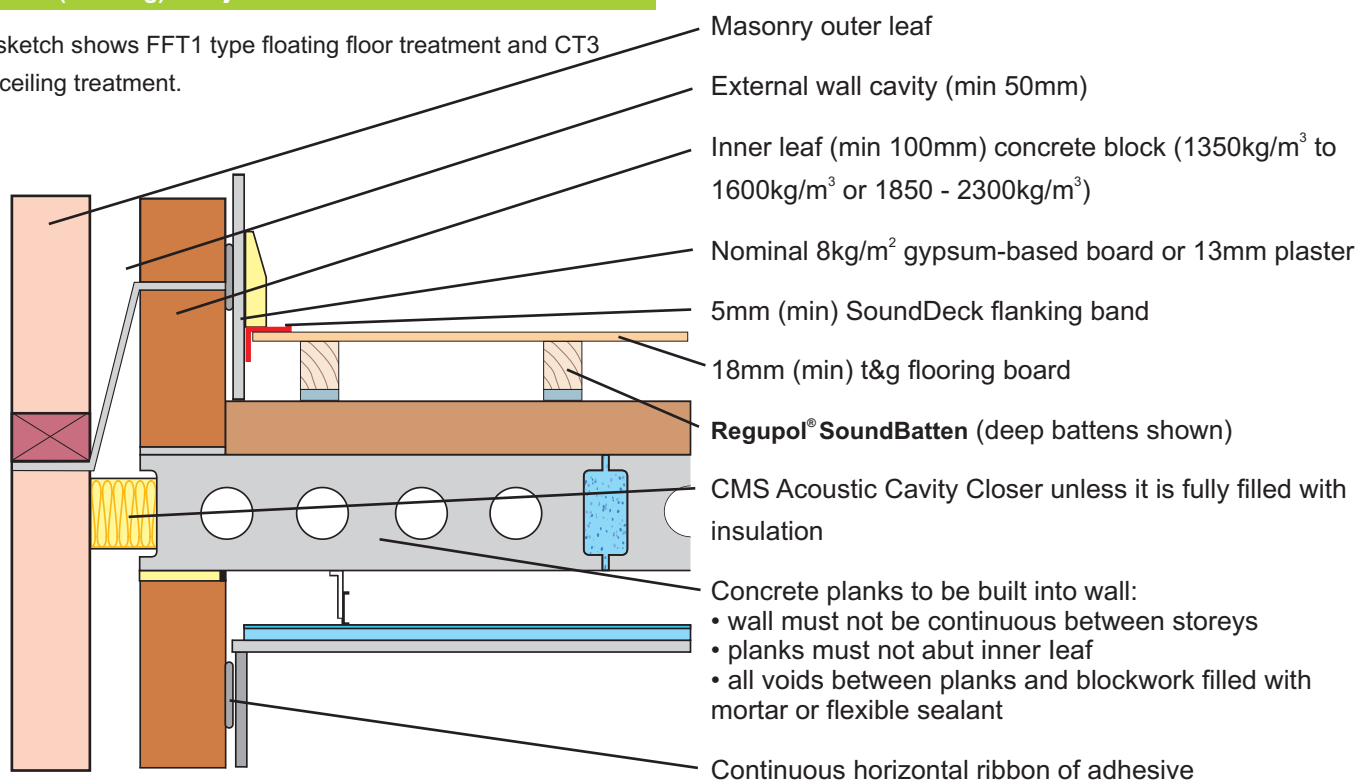
Structural floor - 150mm (min) precast concrete floor plank, 300kg/m<sup>2</sup> (min) mass per unit area

Grout

Ceiling

## External (flanking) wall junction

The sketch shows FFT1 type floating floor treatment and CT3 type ceiling treatment.



Masonry outer leaf

External wall cavity (min 50mm)

Inner leaf (min 100mm) concrete block (1350kg/m<sup>3</sup> to 1600kg/m<sup>3</sup> or 1850 - 2300kg/m<sup>3</sup>)

Nominal 8kg/m<sup>2</sup> gypsum-based board or 13mm plaster

5mm (min) SoundDeck flanking band

18mm (min) t&g flooring board

Regupol® SoundBatten (deep battens shown)

CMS Acoustic Cavity Closer unless it is fully filled with insulation

Concrete planks to be built into wall:

- wall must not be continuous between storeys
- planks must not abut inner leaf
- all voids between planks and blockwork filled with mortar or flexible sealant

Continuous horizontal ribbon of adhesive

## Installation Service

In addition to supply of this product CMS Acoustic Solutions offers a competitively-priced installation service anywhere in the UK. Use of our service ensures that installation is performed to the highest standards by tradesmen fully experienced in the specialist skills of fitting acoustic materials correctly. For further details contact our technical team on 01925 577711.

E-mail: [info@cmsacoustics.co.uk](mailto:info@cmsacoustics.co.uk)

Web: [www.cmsacoustics.co.uk](http://www.cmsacoustics.co.uk)

Northern Office: 4a, Eagle Park, Eagle Park Drive, Warrington WA2 8JA

Tel: 01925 577711 Fax: 01925 577733

Southern Office: Dugard House, Peartree Road, Colchester CO3 0UL

Tel: 01206 216690 Fax: 01206 577954

IMPORTANT: Directions for use are given for guidance only and are not intended to form part of any contract. They should be varied or adapted to suit your particular materials or conditions of use. Goods supplied by the company are made to approved standards from the highest quality raw materials but no warranty or guarantee is given as to their suitability for any particular purpose or application, and no liability is accepted for any loss or damage arising directly or indirectly from the use of the Company's products irrespective of any information given to us as to intended use of such products. It is therefore recommended that prospective users should test a sample of this product under their own conditions to satisfy themselves that the product is suitable for the purpose intended.

CADS 6017C - 3 1005 © CMS Acoustic Solutions Ltd 2005

Regupol® and Regufoam® are registered trade marks of BSW GmbH