

Kier Western

Priory Community School new build project

The Challenge

When Kier Western undertook the development of three new school buildings at Priory Community School, Western Super Mare, it needed to make adequate provision for noise control to ensure optimum teaching and learning conditions post completion.

A two-storey block was constructed to hold an assembly hall, music performance suites and classrooms, whilst a further two single-storey extension blocks were built to offer more teaching space.

In the two-storey building, classrooms were situated directly above music rooms and an assembly hall. As such, the high noise levels generated from the ground floor needed to be attenuated.

To minimise the passage of impact and airborne sound between rooms, it was necessary to isolate screeds from the main structures of the three new school buildings. Consequently, Kier sought a high performing under screed acoustic treatment.



Achieving impact sound insulation of 46dB (mean average), Regupol 7210C exceeds the maximum impact sound pressure level specified in the BB93 regulations (55dB).



The Solution

Following consultation with CMS Acoustic Solutions, Kier selected Regupol 7210C, a specialist rubber-bound under screed isolation solution.

Compatible with all types of floor screeds, Regupol 7210C offers a flexible isolation system for any development.

Supplied in easy to handle sheets, Regupol 7210C is quick and simple to install. Furthermore, it does not require separate perimeter strips or any fixing prior to the casting of the screed.

With a material thickness of just 5mm, Regupol 7210C helps to reduce construction heights. The system also benefits from minimal creep properties, even under high loads.

Manufactured to an exact process, Regupol 7210C is constructed of a high density recycled rubber compound. This guarantees the consistency of physical properties between sheets and delivers an environmentally sound acoustic solution.

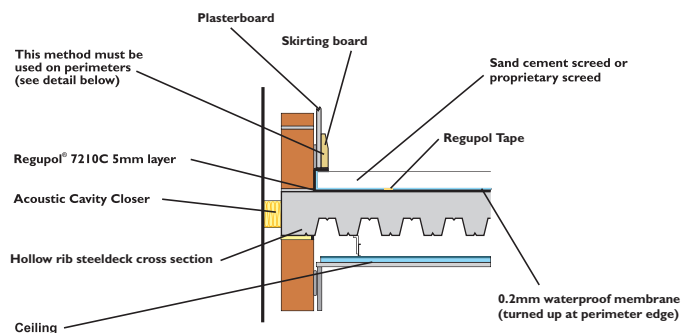
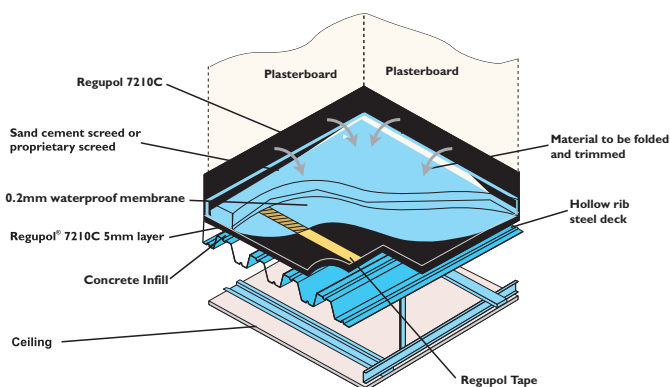
Results

Since the completion of the three new school buildings at Priory Community School, sound transfer between rooms has been minimised, ensuring that lessons remain undisturbed.

Achieving impact sound insulation of 46dB (mean average), Regupol 7210C exceeds the maximum impact sound pressure level specified in the BB93 regulations (55dB).

Mike Carter, project manager at Kier Western, explains: "A fundamental part of this project was the identification of a solution that would control noise transmission.

"Regupol 7210C offered a highly cost-effective system that ensured an excellent impact and airborne performance would be achieved, and that activity in one room would not disturb that of another."



Northern Office:

Unit 4 Eagle Park, Eagle Park Drive
Warrington. WA2 8JA
t: 01925 577711 f: 01925 577733

Southern Office:

Dugard House,
Peartree Road, Colchester. CO3 0UL
t: 01206 216 690 f: 01206 577954

info@cmsaccoustics.co.uk
www.cmsaccoustics.co.uk

CMS ACOUSTIC SOLUTIONS