

## Regupol® E48 - Partition Detail

### Before you start installation

1. **Prepare the Base Floor.** It is important that the base floor is **Dry**, **Clean** (free of dirt and concrete dust) and **Flat**.

### Installing the Regupol® Isolating Strip

1. Bond the **Regupol® Isolating Strip** to the base floor (please contact CMS Acoustics for a list of recommended adhesives). Bonding should be carried out in accordance with the adhesive manufacturer's instructions. Ensure that a sufficient width of **Regupol® Isolating Strip** is used for the partition and cladding. Any surplus material should be trimmed with a builder's knife.

2. Bond the channel to the **Regupol® Isolating Strip**. **Do not** use mechanical fixings such as screws or pins.

### Installing the Regupol® E48

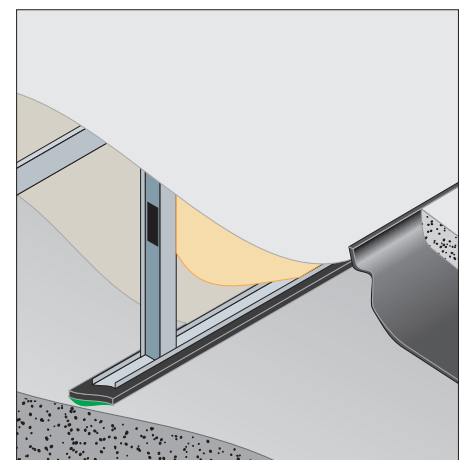
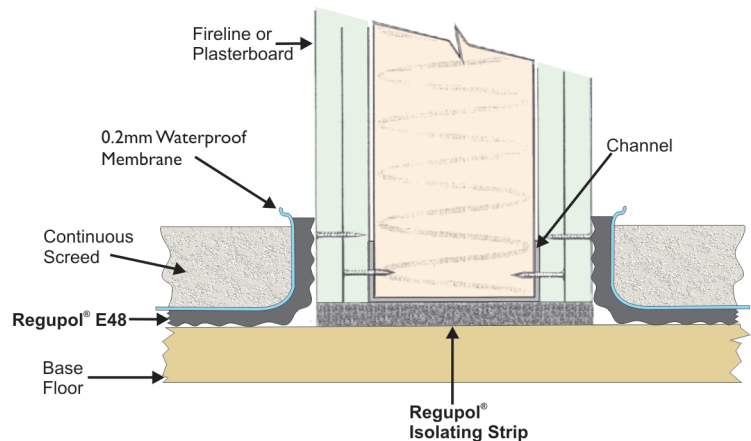
Install the **Regupol® E48** according to the instructions in Installation Guidelines CMS16001.

#### NB

*The recognized technical rules of the industry, and the code of practice requirements of BS8203:2001 "Installation of Resilient Floor Coverings" are to be observed.*

### ISOLATING STRIP DIMENSIONS

<b>Thickness</b>	<b>6mm</b>
<b>Widths</b>	<b>43mm</b>
	<b>100mm</b>
	<b>120mm</b>
	<b>200mm</b>
<b>Length</b>	<b>1250mm</b>



### Installation Service

In addition to supply of this product CMS Acoustic Solutions offers a competitively-priced installation service anywhere in the UK. Use of our service ensures that installation is performed to the highest standards by tradesmen fully experienced in the specialist skills of fitting acoustic materials correctly. For further details contact our technical team on 01925 577711.

E-mail: [info@cmsacoustics.co.uk](mailto:info@cmsacoustics.co.uk)

Web: [www.cmsacoustics.co.uk](http://www.cmsacoustics.co.uk)

**Northern Office:** 4a, Eagle Park, Eagle Park Drive, Warrington WA2 8JA  
**Tel:** 01925 577711 **Fax:** 01925 577733

**Southern Office:** Dugard House, Peartree Road, Colchester CO3 0UL  
**Tel:** 01206 216690 **Fax:** 01206 577954

IMPORTANT: Directions for use are given for guidance only and are not intended to form part of any contract. They should be varied or adapted to suit your particular materials or conditions of use. Goods supplied by the company are made to approved standards from the highest quality raw materials but no warranty or guarantee is given as to their suitability for any particular purpose or application, and no liability is accepted for any loss or damage arising directly or indirectly from the use of the Company's products irrespective of any information given to us as to intended use of such products. It is therefore recommended that prospective users should test a sample of this product under their own conditions to satisfy themselves that the product is suitable for the purpose intended.